

FLOW CONTROLS



SWT PVC FLOW CONTROLS

Visit www.swtwater.com for more product listings and information.



PART NUMBER MATRIX

SM-FC	5	F	5	M	.25
PRODUCT CODE	(IS)	(IT)	(OS)	(OT)	(FR)

(IS) INLET SIZE:

38 = 3/8 inch
5 = 1/2 inch
7 = 3/4 inch
1 = 1 inch
15 = 1-1/2 inch
2 = 2 inch
3 = 3 inch

(OS) OUTLET SIZE:

38 = 3/8 inch
5 = 1/2 inch
7 = 3/4 inch
1 = 1 inch
15 = 1-1/2 inch
2 = 2 inch
3 = 3 inch

(FR) FLOW RATE:

.25 = 0.25 gpm (0.9 lpm) 2.5 = 2.5 gpm (9.4 lpm) 12 = 12.0 gpm (45.4 lpm)
.40 = 0.40 gpm (1.5 lpm) 3.0 = 3.0 gpm (11.3 lpm) 15 = 15.0 gpm (56.7 lpm)
.50 = 0.50 gpm (1.8 lpm) 3.5 = 3.5 gpm (13.2 lpm) 20 = 20.0 gpm (75.7 lpm)
.60 = 0.60 gpm (2.2 lpm)
.70 = 0.70 gpm (2.6 lpm) 4.0 = 4.0 gpm (15.1 lpm)*
.90 = 0.90 gpm (3.4 lpm)
1.0 = 1.0 gpm (3.7 lpm) 05 = 5.0 gpm (18.9 lpm)
1.2 = 1.2 gpm (4.5 lpm) 06 = 6.0 gpm (22.7 lpm)
1.4 = 1.4 gpm (5.2 lpm) 07 = 7.0 gpm (26.4 lpm)
1.6 = 1.6 gpm (6.0 lpm) 08 = 8.0 gpm (30.2 lpm)
1.8 = 1.8 gpm (6.8 lpm) 09 = 9.0 gpm (34.0 lpm)
2.0 = 2.0 gpm (7.5 lpm) 10 = 10.0 gpm (37.8 lpm)
2.2 = 2.2 gpm (8.3 lpm)

(IT) INLET TYPE:

F = Female Thread
M = Male Thread
S = Socket
SP = Spigot

(OT) OUTLET TYPE:

F = Female Thread
M = Male Thread
S = Socket
SP = Spigot

* 4.0 gpm (15.1 lpm) flow only available with SM-FC7M7M.

SWT PVC Flow Controls

Part Number	Inlet/Outlet Connections		(FR) Flow Rate Range
	Size, Inches	Type	GPM
SM-FC5SP5SP(FR)	1/2	Spigot	0.25 to 3.5
SM-FC7SP7SP(FR)	3/4	Spigot	0.25 to 10.0
SM-FC1SP1SP(FR)	1	Spigot	0.25 to 20.0
SM-FC15SP15SP(FR)	1-1/2	Spigot	5.0 to 40.0
SM-FC2SP2SP(FR)	2	Spigot	5.0 to 70.0
SM-FC3SP3SP(FR)	3	Spigot	5.0 to 140.0
SM-FC5S5S(FR)	1/2	Socket	0.25 to 3.5
SM-FC7S7S(FR)	3/4	Socket	0.25 to 10.0
SM-FC1S1S(FR)	1	Socket	0.25 to 20.0
SM-FC15S15S(FR)	1-1/2	Socket	5.0 to 40.0
SM-FC2S2S(FR)	2	Socket	5.0 to 70.0
SM-FC3S3S(FR)	3	Socket	5.0 to 140.0

Part Number	Inlet/Outlet Connections		(FR) Flow Rate Range
	Size, Inches	Type	GPM
SM-FC38F38F(FR)	3/8	FPT	0.25 to 3.5
SM-FC5F5F(FR)	1/2	FPT	0.25 to 3.5
SM-FC7F7F(FR)	3/4	FPT	0.25 to 10.0
SM-FC1F1F(FR)	1	FPT	0.25 to 20.0
SM-FC15F15F(FR)	1-1/2	FPT	5.0 to 40.0
SM-FC2F2F(FR)	2	FPT	5.0 to 70.0
SM-FC3F3F(FR)	3	FPT	5.0 to 140.0
SM-FC5M5M(FR)	1/2	MPT	0.25 to 3.5
SM-FC7M7M(FR)*	3/4	MPT	0.25 to 10.0
SM-FC1M1M(FR)	1	MPT	0.25 to 20.0
SM-FC15M15M(FR)	1-1/2	MPT	5.0 to 40.0
SM-FC2M2M(FR)	2	MPT	5.0 to 70.0
SM-FC3M3M(FR)	3	MPT	5.0 to 140.0
SM-FC5F5M(FR)	1/2	FPT/MPT	0.25 to 3.5
SM-FC7F7M(FR)	3/4	FPT/MPT	0.25 to 10.0
SM-FC1F7M(FR)	1 to 3/4	FPT/MPT	5.0 to 10.0
SM-FC1F1M(FR)	1	FPT/MPT	0.25 to 20.0
SM-FC15F15M(FR)	1-1/2	FPT/MPT	5.0 to 40.0
SM-FC2F2M(FR)	2	FPT/MPT	5.0 to 70.0
SM-FC3F3M(FR)	3	FPT/MPT	5.0 to 140.0

Max. Operating Pressure: 150 PSI
Max. Operating Temperature: 140°F (60°C)
Materials: PVC & Buna-N (Standard)
Other plastic materials available (CPVC, Teflon, ABS, etc).
Metric sizes available.

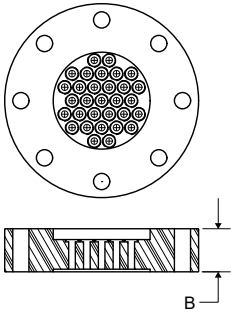
FLOW CONTROLS



SWT PVC FLANGE DISC, EXTERNAL BACKWASH, BRASS & STAINLESS STEEL FLOW CONTROLS

SWT PVC Flange Disc Flow Controls

Flange Face Surface Finish on Both Sides of Flange Discs
Full-Faced Flange Gaskets Available — See last page



Max. Pressure: 150 PSI
Max. Temp: 140°F (60°C)
Materials: PVC & Buna-N (Standard)
Other materials available include PP, CPVC, PVDF, Kynar, PTFE, Teflon

Part Number	Flange Bolt Pattern	Number of Inserts	(FR) Flow Rate Range		Length "B" Inches	OD
			GPM	LPM		
SM-DI40MM4/(FR)	40mm DN	4	5 to 40	18.9 to 151	0.709	150mm
SM-DI1504/(FR)	1.5 inch ANSI	4	5 to 40	18.9 to 151	1.125	5 inch
SM-DI2007/(FR)	2 inch ANSI	7	5 to 70	18.9 to 265	1.125	6 inch
SM-DI30019/(FR)	3 inch ANSI	19	5 to 190	18.9 to 719	1.5	7-1/2 inch
SM-DI80MM19/(FR)	80mm DN80-PN10	19	5 to 190	18.9 to 719	1.5	200mm
SM-DI100MM25/(FR)	100mm DN100-PN10	25	5 to 250	18.9 to 946	2.0	220mm
SM-DI40025/(FR)	4 inch ANSI	25	5 to 250	18.9 to 946	2.0	9 inch
SM-DI40033/(FR)	4 inch ANSI	33	5 to 330	18.9 to 1249	2.0	9 inch
SM-DI60055/(FR)	6 inch ANSI	55	5 to 550	18.9 to 2082	2.5	8-5/8 inch*
SM-DI804216/(FR)	8 inch ANSI	58	5 to 1000	18.9 to 3785	2.5	13-1/2 inch
SM-DI100###/(FR)	10 inch ANSI	**	**	**	2.5	16 inch
SM-DI120###/(FR)	12 inch ANSI	**	**	**	2.5	19 inch

* Flange disc is without bolt holes and fits inside of bolts between two mating 6 inch ANSI flanges.

** Number of inserts and GPM/LPM are flexible.

NOTE: SM-DI60055/(FR) has 1-7/8" material behind rubber inserts.

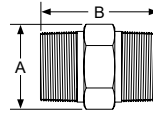
SWT External Backwash Flow Controls



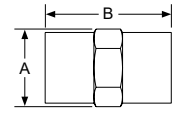
Part Number	Inlet		Outlet		Flow Rate	
	Size Inches	Type	Size Inches	Type	GPM	LPM
BWFC-.75/5	3/4	FPT	1/2	FPT	5	18.9
BWFC-.75/6	3/4	FPT	1/2	FPT	6	22.7
BWFC-.75/7	3/4	FPT	1/2	FPT	7	26.5
BWFC-.75/8	3/4	FPT	1/2	FPT	8	30.3

Flo-et Brass and Stainless Steel Flow Controls

Contains PVC and Buna Internal Components



BRASS



STAINLESS STEEL

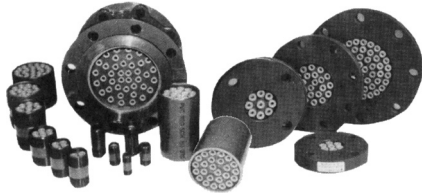
Part Number	Pipe Size Inches	(FR) Flow Rate Range		Dimensions Inches		Housing Material
		GPM	LPM	A	B	
LC-FC7M7M(FR)-BR	3/4" MPT	0.25 to 3.5 5 to 10	0.94 to 13.2 18.9 to 37.8	1-3/32	1-3/4	Brass
LC-FC5F5F(FR)-SS	1/2" FPT	0.25 to 3.5 5 to 10	0.94 to 13.2 18.9 to 37.8	1	1-7/8	Stainless Steel
LC-FC7F7F(FR)-SS	3/4" FPT	0.25 to 3.5 5 to 10	0.94 to 13.2 18.9 to 37.8	1-1/4	2	Stainless Steel
LC-FC1F1F(FR)-SS	1" FPT	5 to 10 12, 15, or 20	18.9 to 37.8 45.4, 56.7, or 75.7	1-1/2	2-3/4	Stainless Steel

FLOW CONTROLS



FLO-CONTROLET™ FULLY AUTOMATIC METERING FLOW CONTROLS

Visit www.swtwater.com for more product listings and information.



PART NUMBER MATRIX

OM	-	TH	0501	/	.25
PRODUCT CODE		(CT)	(PI)		(FR)

(CT) CONFIG TYPE:

TH = PVC Threaded
PE = PVC Spigot
FL = PVC ANSI Flanged
DI = PVC Disc-ANSI
ST = Steel Threaded
BR1 = Brass Threaded
BR2 = Brass Threaded

(PI) PIPE SIZE & INSERTS:

0501 = 0.5" w/ 1 Insert
0751 = .75" w/ 1 Insert
1001 = 1" w/ 1 Insert
1001C = 1" w/ 1 Insert
1252 = 1.25" w/ 2 Inserts
1504 = 1.5" w/ 4 Inserts
2007 = 2" w/ 7 Inserts

2509 = 2.5" w/ 9 Inserts
30014 = 3" w/ 14 Inserts
40025 = 4" w/ 25 Inserts
60054 = 6" w/ 54 Inserts

(FR) FLOW RATE:

.25 = 0.25 gpm (0.9 lpm)
.40 = 0.40 gpm (1.5 lpm)

.50 = 0.50 gpm (1.8 lpm)
.60 = 0.60 gpm (2.2 lpm)
.70 = 0.70 gpm (2.6 lpm)
.90 = 0.90 gpm (3.4 lpm)
1.0 = 1.0 gpm (3.7 lpm)
1.2 = 1.2 gpm (4.5 lpm)
1.4 = 1.4 gpm (5.2 lpm)
1.6 = 1.6 gpm (6.0 lpm)
1.8 = 1.8 gpm (6.8 lpm)
2.0 = 2.0 gpm (7.5 lpm)
2.2 = 2.2 gpm (8.3 lpm)
2.5 = 2.5 gpm (9.4 lpm)
3.0 = 3.0 gpm (11.3 lpm)
3.5 = 3.5 gpm (13.2 lpm)

5 thru 540 = 5 gpm (18.9 lpm) thru 540 gpm (2044 lpm)
in 1 gpm increments

Flo-Controllet™ Flow Controllers

Part Number	Pipe Size Inches	No. of Inserts	(FR) Flow Rate Range GPM	(TH) PVC Threaded NPT		(PE) PVC Spigot		(FL) PVC ANSI Flanged	
				Length Inches	Approx. Weight Lbs.	Length Inches	Approx. Weight Lbs.	Length Inches	Approx. Weight Lbs.
OM-(CT)0501/(FR)	0.5	1	0.25 to 3.5	—	—	—	—	5	0.49
OM-(CT)0751/(FR)	0.75	1	0.25 to 10	—	—	—	—	5	0.68
OM-(CT)1001/(FR)	1	1	5 to 10	—	—	—	—	6	0.96
OM-(CT)1001C/(FR)	1	1	12, 15, or 20	—	—	—	—	6	0.96
OM-(CT)1252/(FR)	1.25	2	10 to 20	3	0.18	6	0.27	6	1.27
OM-(CT)1504/(FR)	1.5	4	20 to 40	3	0.25	6	0.36	6	1.64
OM-(CT)2007/(FR)	2	7	35 to 70	3	0.31	6	0.47	6	2.43
OM-(CT)2509/(FR)	2.5	9	45 to 90	4	0.56	6	0.80	6	3.80
OM-(CT)30014/(FR)	3	14	70 to 140	4	0.68	6	1.00	6	4.76
OM-(CT)40025/(FR)	4	25	125 to 250	4	1.00	6	1.47	6	7.55
OM-(CT)60054/(FR)	6	54	270 to 540	5	2.50	8	3.90	8.5	12.60

Part Number	Pipe Size Inches	No. of Inserts	(FR) Flow Rate Range GPM	(DI) PVC Disc-ANSI		(ST) Steel Threaded NPT		(BR) Brass Threaded NPT	
				Length Inches	Approx. Weight Lbs.	Length Inches	Approx. Weight Lbs.	Length Inches	Approx. Weight Lbs.
OM-(CT)0501/(FR)*	0.5	1	0.25 to 10	—	—	—	—	2	0.12
OM-(CT)0751/(FR)	0.75	1	0.25 to 10	—	—	2.5	0.28	—	—
OM-(CT)1001/(FR)	1	1	5 to 10	—	—	3	0.50	—	—
OM-(CT)1001C/(FR)	1	1	12, 15, or 20	—	—	3	0.53	—	—
OM-(CT)1252/(FR)	1.25	2	10 to 20	—	—	3	0.62	—	—
OM-(CT)1504/(FR)	1.5	4	20 to 40	—	—	3	0.78	—	—
OM-(CT)2007/(FR)	2	7	35 to 70	0.9375	1.12	3	1.06	—	—
OM-(CT)2509/(FR)	2.5	9	45 to 90	0.9375	1.50	4	2.15	—	—
OM-(CT)30014/(FR)	3	14	70 to 140	0.9375	1.75	4	2.75	—	—
OM-(CT)40025/(FR)	4	25	125 to 250	0.9375	2.48	4	4.09	—	—
OM-(CT)60054/(FR)	6	54	270 to 540	0.9375	3.73	5	7.85	—	—

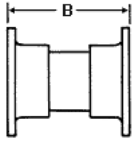
* Brass Threaded has two models: BR1 (0.25 to 3.5 gpm) and BR2 (5 to 10 gpm).

FLOW CONTROLS



SWT PVC ANSI FLANGE & UNION FLOW CONTROLS & FULL-FACED FLANGE GASKETS

SWT PVC ANSI Flange Flow Controls



Part Number	Pipe Size Inches	(FR) Flow Rate Range		Length "B" Inches
		GPM	LPM	
SM-FL15F15F(FR)	1-1/2	5 to 40	18.9 to 151.4	6
SM-FL2F2F(FR)	2	5 to 70	18.9 to 265.0	6
SM-FL3F3F(FR)	3	5 to 140	18.9 to 530.0	6
SM-FL4F4F(FR)	4	5 to 250	18.9 to 946.4	6

SWT PVC Union Flow Controls Specifications



Part Number	Inlet/Outlet Connections		(FR) Flow Rate Range		Overall Length	Nut Outer Diameter	Net Weight
	Size Inches	Type	GPM	LPM			
SM-FC1SU1SU(FR)	1	Socket Union	5 to 10	18.9 to 37.8	8-1/2"	2-9/16"	0.8 Lbs.
SM-FC1FU1FU(FR)	1	FNPT Union	5 to 10	18.9 to 37.8	8-1/2"	2-9/16"	0.8 Lbs.
SM-FC15SU15SU(FR)	1-1/2	Socket Union	5 to 40	18.9 to 151	9-3/4"	3-1/2"	1.5 Lbs.
SM-FC15FU15FU(FR)	1-1/2	FNPT Union	5 to 40	18.9 to 151	9-3/4"	3-1/2"	1.5 Lbs.
SM-FC2SU2SU(FR)	2	Socket Union	5 to 70	18.9 to 264.9	10"	4-9/32"	2.3 Lbs.
SM-FC2FU2FU(FR)	2	FNPT Union	5 to 70	18.9 to 264.9	10"	4-9/32"	2.3 Lbs.
SM-FC3SU3SU(FR)	3	Socket Union	5 to 140	18.9 to 529.9	10-3/4"	6-5/32"	5.5 Lbs.
SM-FC3FU3FU(FR)	3	FNPT Union	5 to 140	18.9 to 529.9	10-3/4"	6-5/32"	5.5 Lbs.
SM-FC4SU4SU(FR)	4	Socket Union	5 to 250	18.9 to 946.3	11-3/4"	7-3/4"	9.9 Lbs.
SM-FC4FU4FU(FR)	4	FNPT Union	5 to 250	18.9 to 946.3	11-3/4"	7-3/4"	9.9 Lbs.

Full-Faced Flange Gaskets

Flange Size	Bolt Holes	Part Number		
		Buna-N	EPDM	Viton/FKM
1/2	4	853-005-GB	853-005-GE	853-005-GV
3/4	4	853-007-GB	853-007-GE	853-007-GV
1	4	853-010-GB	853-010-GE	853-010-GV
1-1/4	4	853-012-GB	853-012-GE	853-012-GV
1-1/2	4	853-015-GB	853-015-GE	853-015-GV
2	4	853-020-GB	853-020-GE	853-020-GV
2-1/2	4	853-025-GB	853-025-GE	853-025-GV
3	4	853-030-GB	853-030-GE	853-030-GV
4	8	853-040-GB	853-040-GE	853-040-GV
5	8	853-050-GB	853-050-GE	853-050-GV
6	8	853-060-GB	853-060-GE	853-060-GV